

PRODUCT TECHNICAL DATA

SAILING GEAR - SIZING INFORMATION GUIDE

ADULT RANGE		XXS	XS	S	M	L	XL	XXL	XXXL
Height*	cm	163 - 168	167 - 172	171 - 176	175 - 180	179 - 184	183 - 188	187 - 192	192+
	ft./in.	5'4" - 5'6"	5'6" - 5'8"	5'7" - 5'9"	5'9" - 5'11"	5'10" - 6'0"	6'0" - 6'2"	6'2" - 6'4"	6'4"+
Chest*	cm	86 - 91	90 - 95	94 - 99	98 - 103	102 - 107	106 - 111	110 - 115	115 - 120
	in.	33 - 35	35 - 37	37 - 39	39 - 41	40 - 42	42 - 44	43 - 45	45 - 47
Waist*	cm	63 - 69	67 - 73	71 - 77	75 - 81	79 - 86	83 - 90	87 - 94	91 - 98
	in.	25 - 27	26 - 29	28 - 30	30 - 32	31 - 34	33 - 35	34 - 37	36 - 38
Leg Length (CL25, CL27)	cm	67	69	71	73	75	77	79	n/a
	in.	26	27	28	29	30	30	31	n/a
Sleeve Length (CL20,CL21,CL22,CL24)	cm	66	68	69	71	72	74	75	n/a
	in.	26	27	27	28	28	29	30	n/a
Chest (CL80)	cm	106	112	118	124	130	136	142	146
	in.	30	31	32	33	34	35	35	36
Length (CL80)	cm	64	68	70	72	74	76	78	80
	in.	25	27	28	28	29	30	30	31
Sleeve length (CL80)	cm	76	79	82	84	86	88	90	91
	in.	30	31	32	33	34	35	35	36

JUNIOR RANGE

SIZE 08

SIZE 10

SIZE 12

Height*

cm

127 - 134

135 - 144

146 - 155

ft./in.

4'2" - 4'5"

4'5" - 4'9"

4'9" - 5'1"

Chest*

cm

67 - 71

71 - 75

75 - 79

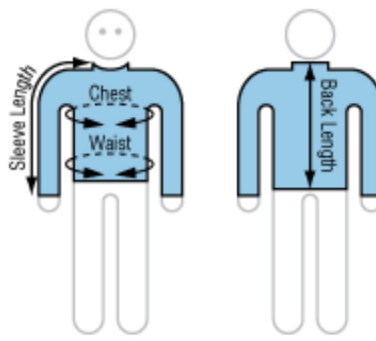
JUNIOR RANGE		SIZE 08	SIZE 10	SIZE 12
Waist*	in.	26 - 28	28 - 30	30 - 31
	cm	59 - 64	62 - 67	65 -70
Sleeve Length (CL21J)	in.	23 - 25	24 - 26	25 -28
	cm	56	58	61
Chest (CL80)	in.	22	23	24
	cm	88	94	100
Length (CL80)	in.	35	37	39
	cm	53	58	62
Sleeve length (CL80)	in.	21	23	24
	cm	61	66	71
	in.	24	26	28



FRONT VIEW



REAR VIEW



SAILING GEAR

LAYERING OPTION	FEATURE	COLD WET WINDY		COLD DRY LIGHT/NO WIND		WARM WET WINDY		HOT WET WINDY		VERY HOT
NUMBER OF LAYERS		3	2	2	2	1	2	2	1	
CL21 Thermal Top	Warm when dry	•	•	•						
CL24 Neoprene Skin Top	Warm when dry	•		•		•				
CL20 & CL22 Rash Top	Maximum sun protection					•		•	•	
CL80 Smock Top	Waterproof and windproof barrier	•	•			•		•		

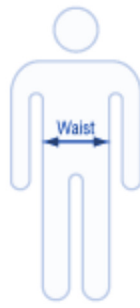
GLOVE SIZE

		XXXXXS	XXXS	XXS	XS	S	M	L	XL	XXL
Fullest Point of Hand*	cm	18	19	20	21	22	23	24	25.5	26.5
	in.	7	7 1/2	7 1/8	8 1/4	8 5/8	9	9 1/2	10	10 3/8



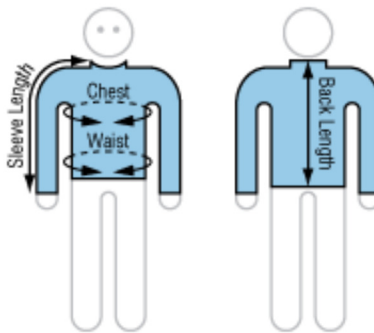
TRAPEZE HARNESSSES

		S	M	L	XL	XXL
Suits Waist*	cm	<76	76-81	81-86	86-92	>92
	in.	<30	30-32	32-34	34-36	>36



CL180 - SOFTSHELL JACKET

ADULT RANGE		XS	S	M	L	XL	XXL
Back Length*	cm	66	68.5	70.5	73	75	79.5
	in.	26	27	28	29	30	31
Chest*	cm	107	112	117	122	127	132
	in.	42	44	46	48	50	52
Waist*	cm	95	101	107	113	118	122
	in.	37	40	42	44	46	48
Sleeve Length	cm	74	76	79	82	85	87
	in.	29	30	31	32	33	34



FOOTWEAR

		XXXS	XXS	XS	S	M	L	XL	XXL
Foot length	cm	21 - 22	22.5 - 23.5	23.5 - 24.5	24.5 - 25.5	25.5 - 26.5	26.5 - 27.5	27.5 - 28.5	28.5 - 29.5
	ft./in.	8 ¼ - 8 5/8	8 7/8 - 9 ¼	9 ¼ - 9 5/8	9 5/8 - 10	10 - 10 3/8	10 3/8 - 10 ¾	10 ¾ - 11 ¼	11 ¼ - 11 5/8

XXXX XXS XS S M L XL XXL

Typical Equivalent Country Sizing**

Europe		33 -34	35 -36	36 - 38	38 - 40	40 - 43	43 - 44	44 - 46 ½	46 ½ - 48 ½
U.S. & Canada	M	3	3 ½ - 4 ½	4 ½ - 6	6 - 7 ½	7 ½ - 9	9 - 10 ½	10 ½ - 12 ½	12 ½ - 14
	W	3	5 - 6	6 - 7 ½	7 ½ - 9	9 - 10 ½	10 ½ - 12	12 - 14	14 - 15 ½
U.K.	M	2	3 - 4	4 - 5 ½	5 ½ - 7	7 - 8 ½	8 ½ - 10	10 - 12	12 - 13 ½
	W	2	2 ½ - 3 ½	3 ½ - 5	5 - 6 ½	6 ½ - 8	8 - 9 ½	9 ½ - 11 ½	11 ½ - 13
Australia.	M	2	3 - 4	4 - 5 ½	5 ½ - 7	7 - 8 ½	8 ½ - 10	10 - 12	12 - 13 ½
	W	2	3 ½ - 4 ½	4 ½ - 6	6 - 7 ½	7 ½ - 9	9 - 10 ½	10 ½ - 12 ½	12 ½ - 14
Japan	M	21	21 ½ - 22 ½	22 ½ - 24	24 - 25 ½	25 ½ - 27 ½	27 ½ - 28 ½	28 ½ - 30 ½	30 ½ - 31 ½
	W	21	21 - 22	22 - 23 ½	23 ½ - 25	25 - 27	27 - 28	28 - 30	30 - 31



*Sizes are based on person not garment.

**Country sizes are indicative only and subject to variation. Your 'foot length' measurement should be used as the most accurate guide for sizing.

***These figures indicative for the full circumference in cm.